

MACHINE TOOLING RECOMMENDATION GUIDE

Concrete Surface Preparation 01

Polished Concrete System 02

Polished Concrete Topping System 03

Cementitious Terrazzo Refinishing System 04

Epoxy Terrazzo Refinishing System 05

Tooling Part Numbers 06

Cobra





Glue & Mastic

Epoxy & Paint

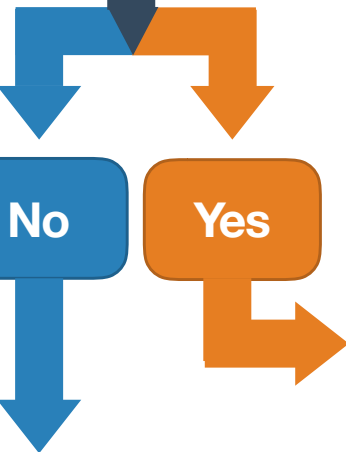
Thinset

CSP 3 Profile

Cure 'n Seal

Exposed Aggregate

Is your coating thicker than 1/8" (3mm)?



450-800

Speed Range

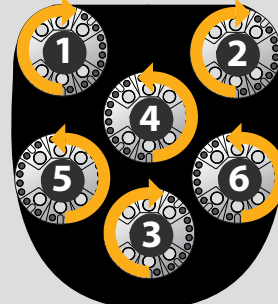
Plate Configuration

PCD w/ TCD Shark (CW)
002-1350-00
Qty 12

PCD w/TCD Shark (CCW)
002-1349-00
Qty 6

IMPORTANT

Tooling labelled RIGHT are CW (clockwise) Tooling labelled LEFT are CCW (counter clockwise)



Determine the surface hardness using the MOHS test kit

MOHS 7.5-9

Hard Surface (Gold)

450-800

Speed Range

Plate Configuration

STD Teardrop 16 Grit
002-1484-00
Qty 12

STD 2 Seg Shark 16 Grit
002-1496-00
Qty 6

MOHS 4.5-7.5

Medium Surface (White)

450-800

Speed Range

Plate Configuration

STD Teardrop 16 Grit
002-1502-00
Qty 12

STD 2 Seg Shark 16 Grit
002-1413-00
Qty 6

MOHS 2-4.5

Soft Surface (Red)

450-800

Speed Range

Plate Configuration

STD Teardrop 16 Grit
002-1508-00
Qty 12

STD 2 Seg Shark 16 Grit
002-1414-00
Qty 6

Step 1

Metal Grinding - Prepare surface to achieve desired exposure



Plate Configuration



Speed Range

STD TearDrop
30/40 Grit
Qty 18

STD TearDrop
70/80 Grit
Qty 18

Refer to page 6 for Tooling Bond

Quick Tip

Start with highest grit (70/80) where possible and move to lower grit (30/40) when necessary.

Step 2

Transition Stage - Remove metal tooling marks and prepare for densifying



Plate Configuration



Speed Range

Achromic
50 Grit
Qty 18

OR

Achromic
100 Grit
Qty 18

OR

Hybrid
100 Grit
Qty 18

Refer to page 6 for Tooling Bond

Quick Tip

Use **Achromic** tooling for Hard or Medium surfaces. In most cases start with 100G. On floor 7.5 and up, starting with a 50G may be required to pull metal scratches quicker. Use **Hybrid** tools on floors 4 and below.

Step 3

Densifying - Harden floor and prepare for polishing stage



ULTRAdensifil
200-700 sq ft per gal coverage

Quick Tip

This 2 in 1 product can be used as a pore and crack filler. Ensure all tool marks are removed prior to densifying. Available in 1qt, 1gal, 2.5gal & 5gal.

Step 4

Polishing - Bring floor to desired level of shine

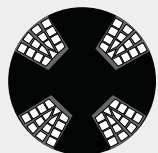


Plate Configuration



Speed Range

Matte
ULTRASHINE Resin
200 Grit
Qty 24

Semi-Gloss
ULTRASHINE Resin
200-800 Grit
Qty 24 of each

High-Gloss
ULTRASHINE Resin
200-1500 Grit
Qty 24 of each

Quick Tip

See tooling legend on page 6 for part numbers. For grits higher than 1500, use blue diamond pads.

Step 5

Sealing - Protect and seal polished concrete surface



ULTRAguard Sealer
500-700 sq ft per gal coverage

Quick Tip

Refer to TDS for application directions. Always test in an inconspicuous area to verify compatibility of substrate to sealer. Available in 1qt, 1gal, 2.5gal & 5gal.

Step 6

Burnishing - Achieve maximum shine and polish



Buffing Pad



Speed Range

6" Pink Nylon Pad
Qty 6

Quick Tip

Burnish floor with clean or new Pink Pads to achieve maximum shine. **On bigger jobs use a high speed propane or electric burnisher**

Step 1

Metal Grinding - Prepare surface to achieve desired exposure



Plate Configuration



Speed Range

STD TearDrop
30/40 Grit
Qty 18

STD TearDrop
70/80 Grit
Qty 18

Recommend Gold Bond (Soft Bond)

Quick Tip

Use a combination of two 30/40 Grit segments and two 70/80 Grit segments per tooling plate to remove polymer cream layer and expose aggregate.

Step 2

Transition Stage - Remove metal tooling marks and prepare for densifying



Plate Configuration



Speed Range

Achromic
100 Grit
Qty 18

Quick Tip

Use 100 Grit Achromic tooling to effectively remove scratches and create a surface ready for densifying.

Step 3

Densifying - Harden floor and prepare for polishing stage



ULTRAdensifil
200-700 sq ft per gal coverage

Quick Tip

This 2 in 1 product can be used as a pore and crack filler. Ensure all tool marks are removed prior to densifying. Available in 1qt, 1gal, 2.5gal & 5gal.

Step 4

Polishing - Bring floor to desired level of shine

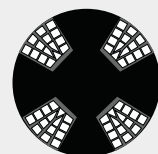


Plate Configuration



Speed Range

Matte
ULTRASHINE Resin
200 Grit Qty 24
6" Pink Nylon Pad
Qty 6

Semi-Gloss Achromic
200 Grit Qty 18
ULTRASHINE Resin
400 Grit Qty 24
6" Diamond Pad
800 Grit Qty 8

High-Gloss Achromic
200 Grit Qty 18
ULTRASHINE Resin
400-1500 Grit
Qty 24 of each
6" Diamond Pad
3000 Grit Qty 6

Quick Tip

Remove Plug 'N Go Plate and change to the Velcro Adapter Plate.

Step 5

Sealing - Protect and seal polished concrete surface



ULTRAgard Sealer
500-700 sq ft per gal coverage

Quick Tip

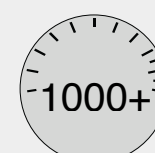
Refer to TDS for application directions. Always test in an inconspicuous area to verify compatibility of substrate to sealer. Available in 1qt, 1gal, 2.5gal & 5gal.

Step 6

Burnishing - Achieve maximum shine and polish



Buffing Pad



Speed Range

6" Pink Nylon Pad
Qty 6

Quick Tip

Burnish floor with clean or new Pink Pads to achieve maximum shine. **On bigger jobs use a high speed propane or electric burnisher**

Step 1

Metal Grinding - Prepare surface to achieve desired exposure



Plate
Configuration



Speed
Range

HD TearDrop
70/80 Grit
Qty 24

Refer to page 6 for Tooling Bond

Quick Tip

Start with highest grit (70/80) where possible but if necessary use a combination of two 70/80 Grit and two 30/40 Grit.



Step 2

Transition Stage - Remove metal tooling marks and prepare for densifying



Plate
Configuration



Speed
Range

Achromic Pro Plus
100 Grit
Qty 24

Quick Tip

Remove all tooling marks using the Achromic tooling before moving on to the next step.



Step 3

Densifying - Harden floor and prepare for polishing stage



ULTRAdensifil
200-700 sq ft per gal coverage

Quick Tip

This 2 in 1 product can be used as a pore and crack filler. Ensure all tool marks are removed prior to densifying. Available in 1qt, 1gal, 2.5gal & 5gal.



Step 4

Polishing - Bring floor to desired level of shine

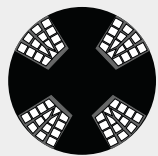


Plate
Configuration



Speed
Range

Matte
ULTRASHINE Resin
200 Grit
Qty 24

Semi-Gloss
ULTRASHINE Resin
200-800 Grit
Qty 24 of each

High-Gloss
ULTRASHINE Resin
200-1500 Grit
Qty 24 of each

Quick Tip

See tooling legend on page 6 for part numbers. For grits higher than 1500, use blue diamond pads.



Step 5

Sealing - Protect and seal polished concrete surface



ULTRAguard Sealer
500-700 sq ft per gal coverage

Quick Tip

Refer to TDS for application directions. Always test in an inconspicuous area to verify compatibility of substrate to sealer. Available in 1qt, 1gal, 2.5gal & 5gal.



Step 6

Burnishing - Achieve maximum shine and polish



Buffing
Pad



Speed
Range

7" Pink Nylon Pad
Qty 8

Quick Tip

Burnish floor with clean or new Pink Pads to achieve maximum shine. **On bigger jobs use a high speed propane or electric burnisher**



Step 1

Plate
ConfigurationSpeed
Range

STD TearDrop
70/80 Grit
Qty 36

Refer to page 6 for Tooling Bond

Start with highest grit (70/80) where possible but if necessary use a combination of two 70/80 Grit and two 30/40 Grit.

Step 2

Transition Stage - Remove metal tooling marks and prepare for densifying

Plate
ConfigurationSpeed
Range

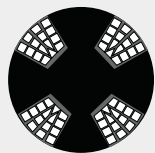
Achromic
100 Grit
Qty 18

Quick Tip

Remove all tooling marks using the Achromic tooling before moving on to the next step.

Step 3

Polishing - Bring floor to desired level of shine

Plate
ConfigurationSpeed
Range

Matte
ULTRASHINE
Resin
200 Grit
Qty 24

Semi-Gloss
ULTRASHINE
Resin
200-800 Grit
Qty 24 of each

High-Gloss
ULTRASHINE
Resin
200-1500 Grit
Qty 24 of each

Quick Tip

See tooling legend on page 6 for part numbers. For grits higher than 1500 use blue diamond pads.

Step 4

Sealing - Protect and seal polished concrete surface



ULTRAGuard Sealer
500-700 sq ft per gal coverage

Quick Tip

Refer to TDS for application directions. Always test in an inconspicuous area to verify compatibility of substrate to sealer. Available in 1qt, 1gal, 2.5gal & 5gal.

Step 5

Burnishing - Achieve maximum shine and polish

Buffing
PadSpeed
Range

6" Pink Nylon Pad
Qty 6

Quick Tip

Burnish floor with clean or new Pink Pads to achieve maximum shine. **On bigger jobs use a high speed propane or electric burnisher**

Name	Part Number
Surface Prep	
PCD with TCD Shark (Clockwise)	002-1350-00
PCD with TCD Shark (Counter-Clockwise)	002-1349-00
STD Teardrop 16 Grit (Gold, Hard Surface)	002-1484-00
STD Teardrop 16 Grit (White, Medium Surface)	002-1502-00
STD Teardrop 16 Grit (Red, Soft Surface)	002-1508-00
2 Seg Shark STD 16 Grit (Gold, Hard Surface)	002-1496-00
2 Seg Shark STD 16 Grit (White, Medium Surface)	002-1413-00
2 Seg Shark STD 16 Grit (Red, Soft Surface)	002-1414-00
STD Teardrop 30/40 Grit (Gold, Hard Surface)	002-1485-00
STD Teardrop 30/40 Grit (White, Medium Surface)	002-1503-00
STD Teardrop 30/40 Grit (Red, Soft Surface)	002-1509-00
STD Teardrop 70/80 Grit (Gold, Hard Surface)	002-1486-00
STD Teardrop 70/80 Grit (White, Medium Surface)	002-1504-00
STD Teardrop 70/80 Grit (Red, Soft Surface)	002-1510-00
Transitional	
Achromic Resin 100 Grit (Medium & Hard Surfaces)	003-0247-00
Achromic Resin 200 Grit (Medium & Hard Surfaces)	003-0248-00
Hybrid Resin 100 Grit (Soft Surface)	003-0223-01
Polishing	
UltraShine Resin 200 Grit	003-0376-00
UltraShine Resin 400 Grit	003-0377-00
UltraShine Resin 800 Grit	003-0378-00
UltraShine Resin 1500 Grit	003-0379-00
6" Diamond Pad 3000 Grit	011-0058-00
6" Pink Nylon Pad (Buffing Pad)	011-0044-00
Chemicals	
ULTRAdensifil (Densifier) 1 QT	006-0231-00
ULTRAdensifil (Densifier) 1gal	006-0230-00
ULTRAdensifil (Densifier) 2.5gal	006-0228-00
ULTRAdensifil (Densifier) 5gal	006-0229-00
ULTRAguard (Sealer) 1QT	006-0130-04
ULTRAguard (Sealer) 1gal	006-0152-00
ULTRAguard (Sealer) 2.5gal	006-0130-01
ULTRAguard (Sealer) 5gal	006-0130-00

MOHS 7.5-9

Hard Surface (Gold)

MOHS 4.5-7.5

Medium Surface (White)

MOHS 2-4.5

Soft Surface (Red)